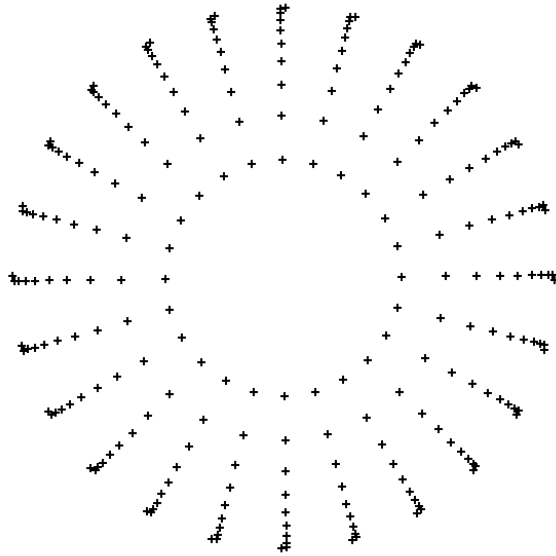


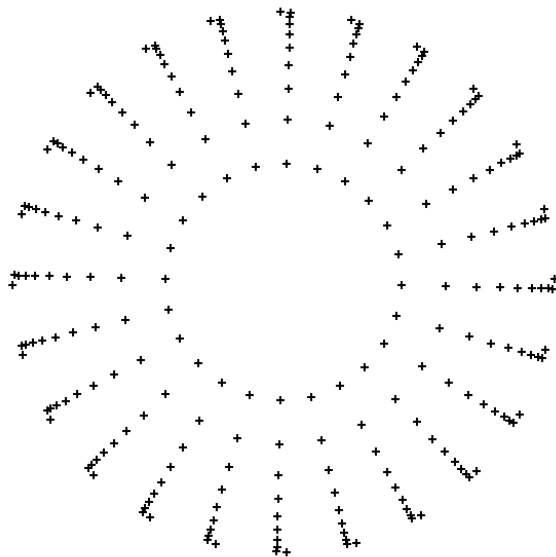
3-D Sphere

$$R = 2.5 @ (2.5, 2.5, 2.5)$$

$$f(x, y, z) = xyz$$

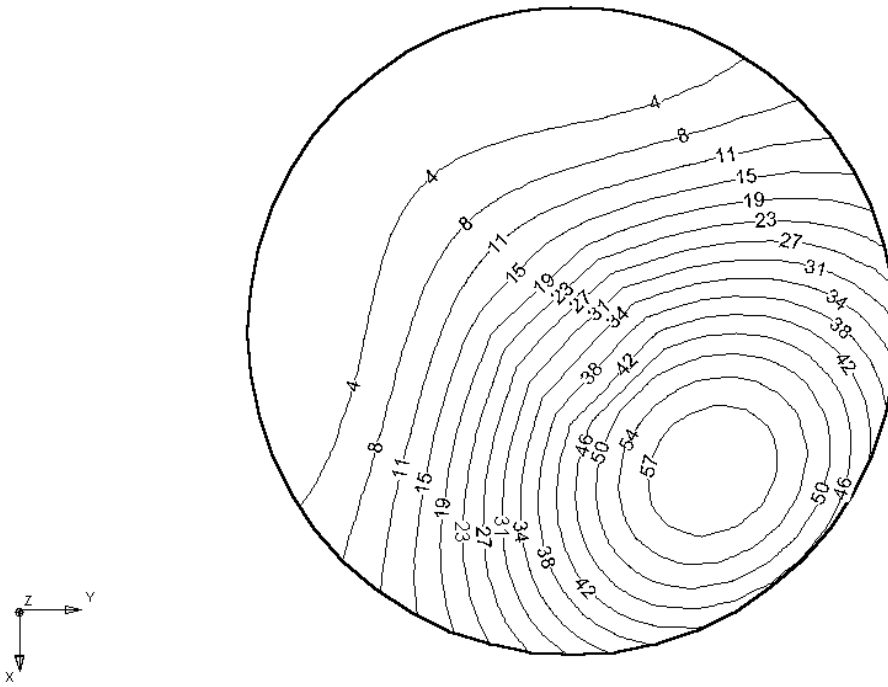


240 Integration Points on North Hemisphere

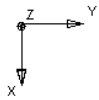
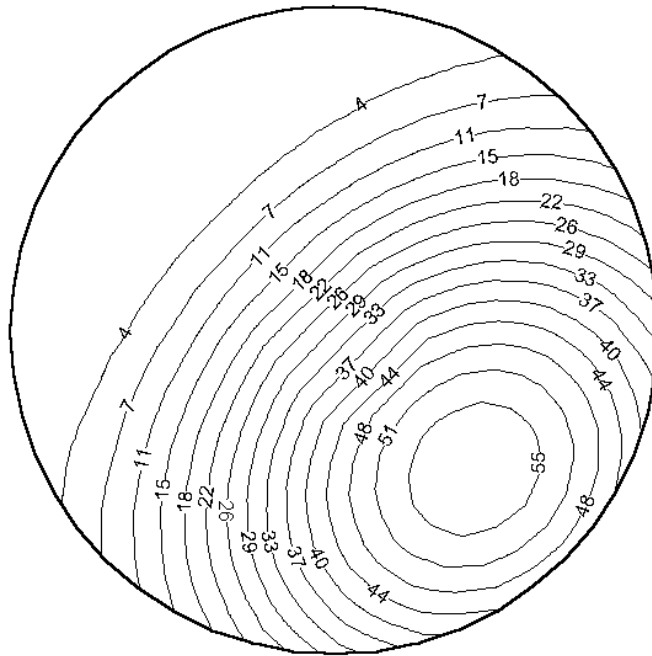


240 Integration Points on South Hemisphere

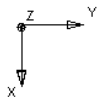
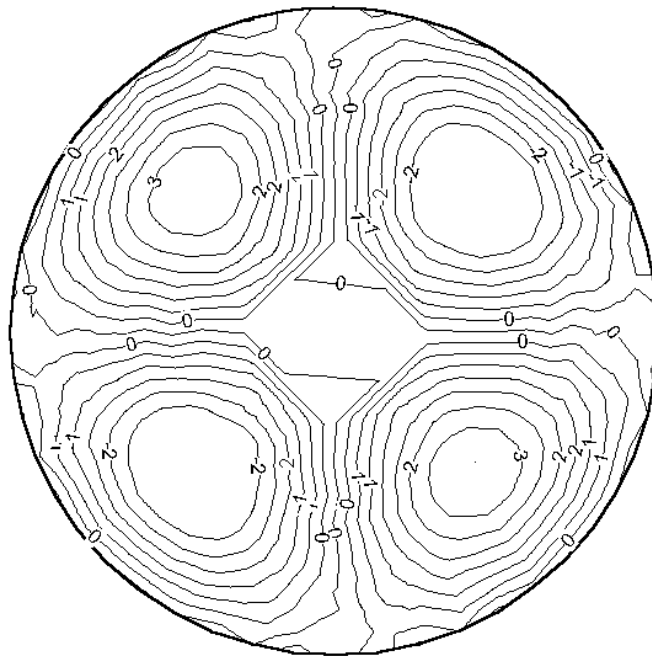
$$f(x,y,z) = xyz$$



Exact Solution on North Hemisphere



Approximation on North Hemisphere

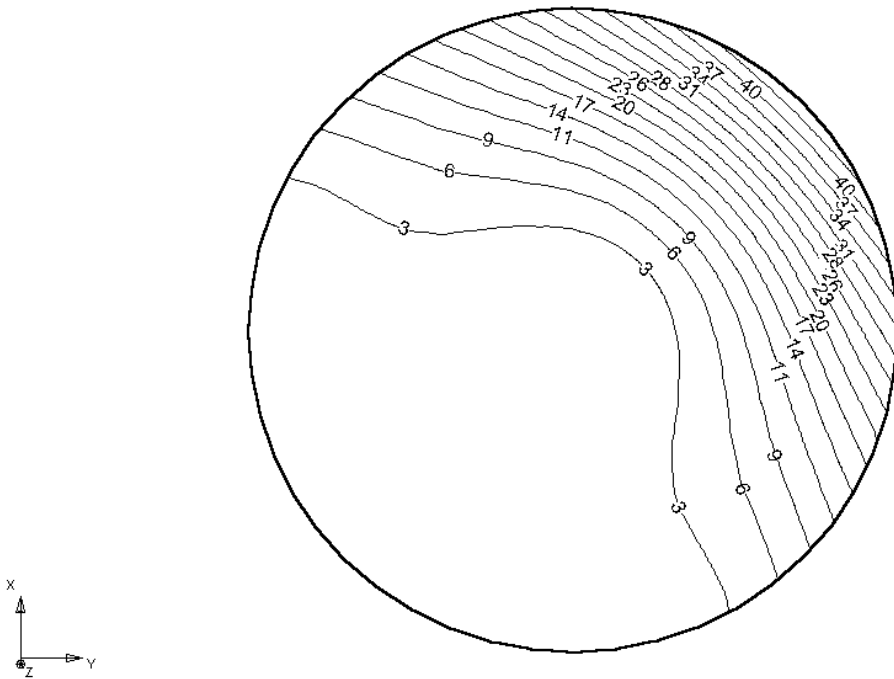


Approximation Error of on North Hemisphere

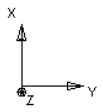
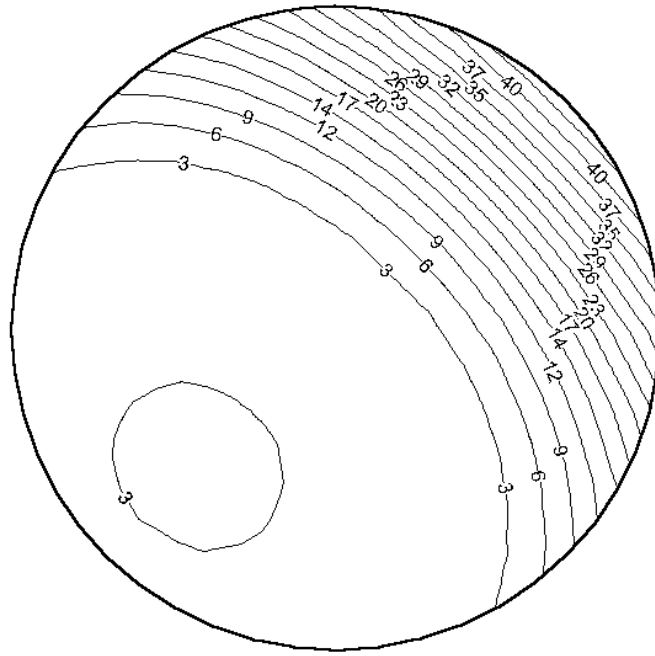
3-D Sphere

$$R = 2.5 @ (2.5, 2.5, 2.5)$$

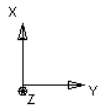
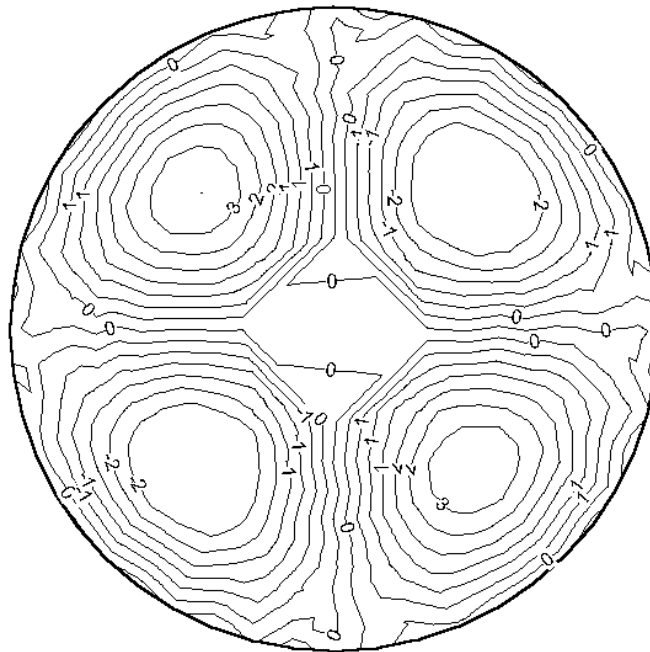
$$f(x, y, z) = xyz$$



Exact Solution on South Hemisphere



Approximation on South Hemisphere



Approximation Error South Hemisphere