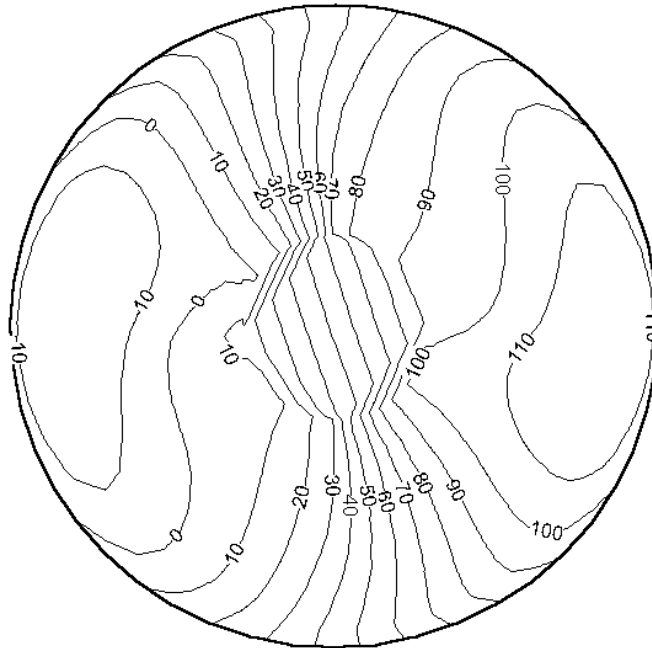
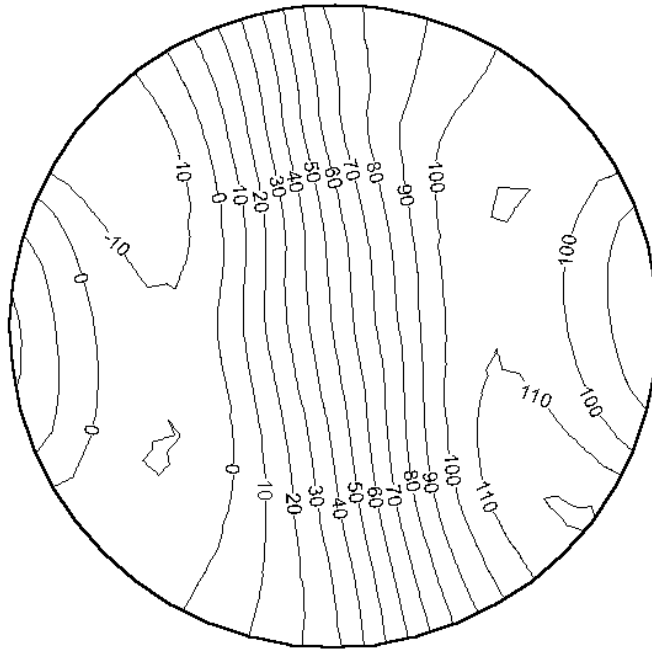


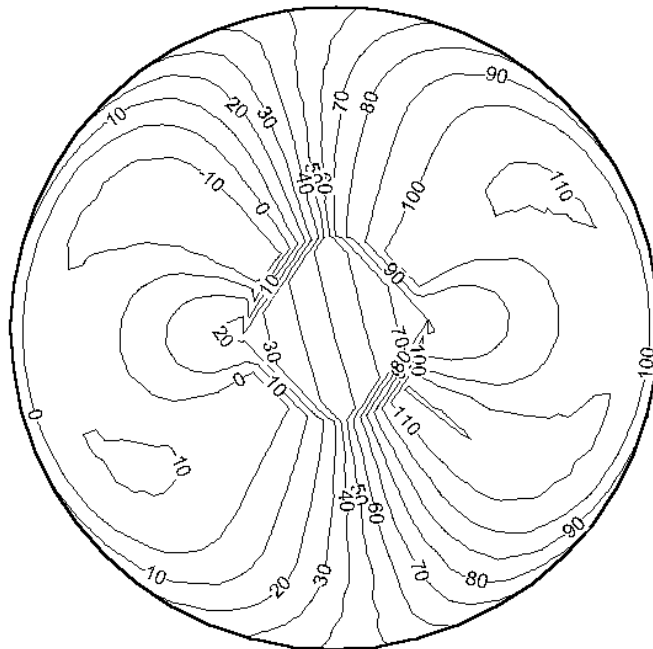
**North Hemisphere Approximation of  
 $F(x,y,z) = 100$  on East Hemisphere  
 $F(x,y,z) = 0$  on West Hemisphere  
 Without Rotation**



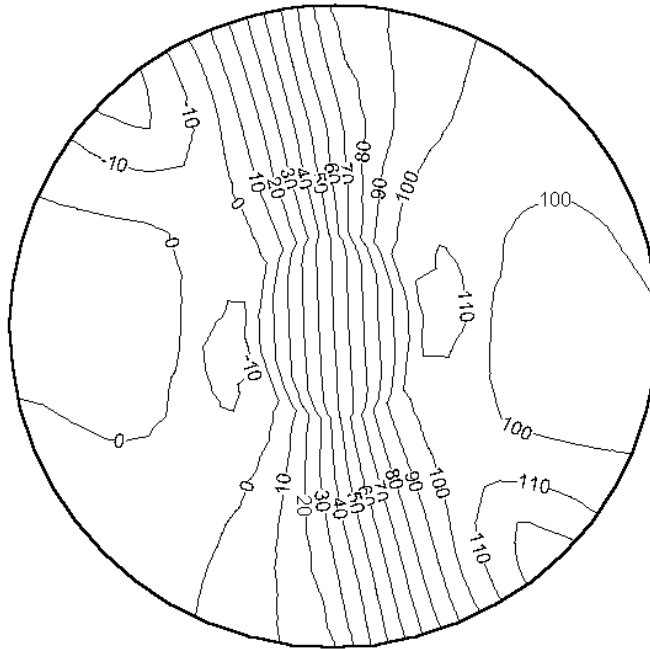
**South Hemisphere Approximation of  
 $F(x,y,z) = 100$  on East Hemisphere  
 $F(x,y,z) = 0$  on West Hemisphere  
 Without Rotation**



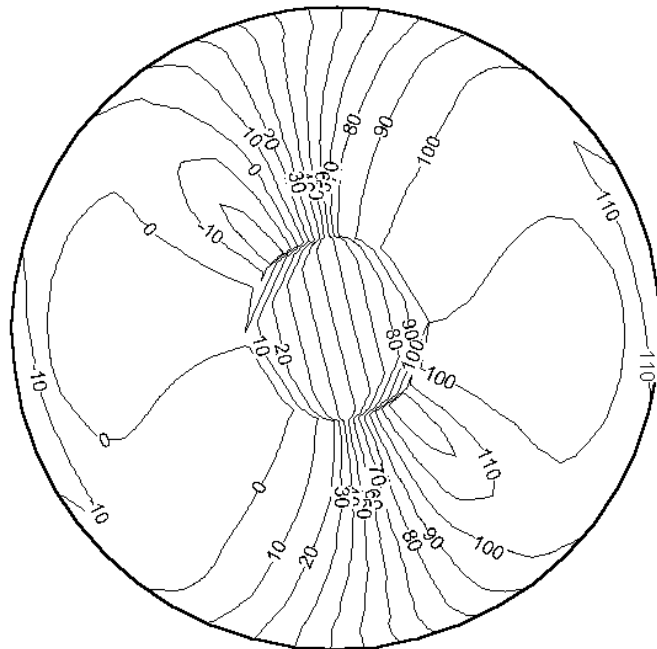
**North Hemisphere Approximation of**  
 $F(x,y,z) = 100$  on East Hemisphere  
 $F(x,y,z) = 0$  on West Hemisphere  
 With Rotation I



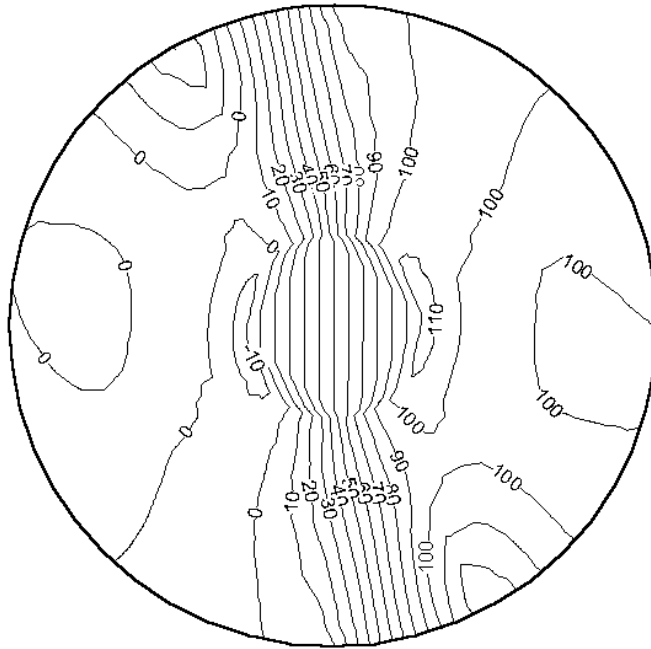
**South Hemisphere Approximation of**  
 $F(x,y,z) = 100$  on East Hemisphere  
 $F(x,y,z) = 0$  on West Hemisphere  
 With Rotation I



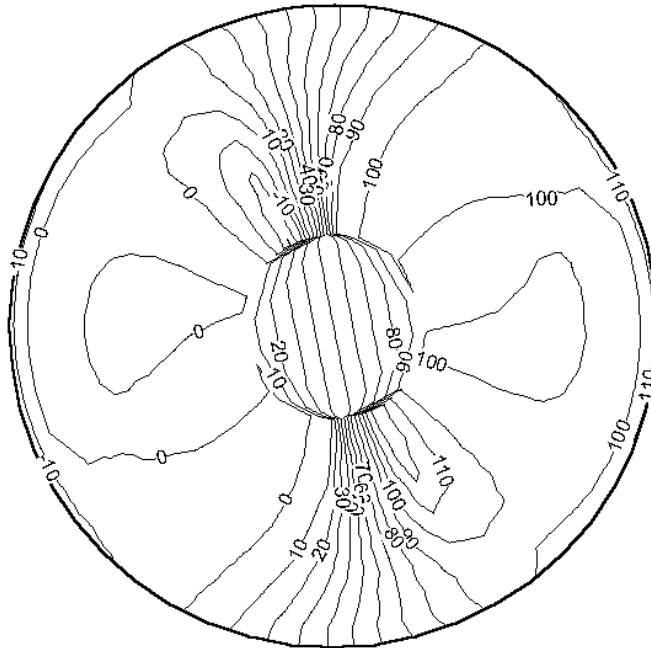
**North Hemisphere Approximation of**  
 **$F(x,y,z) = 100$  on East Hemisphere**  
 **$F(x,y,z) = 0$  on West Hemisphere**  
**With Rotations I and II**



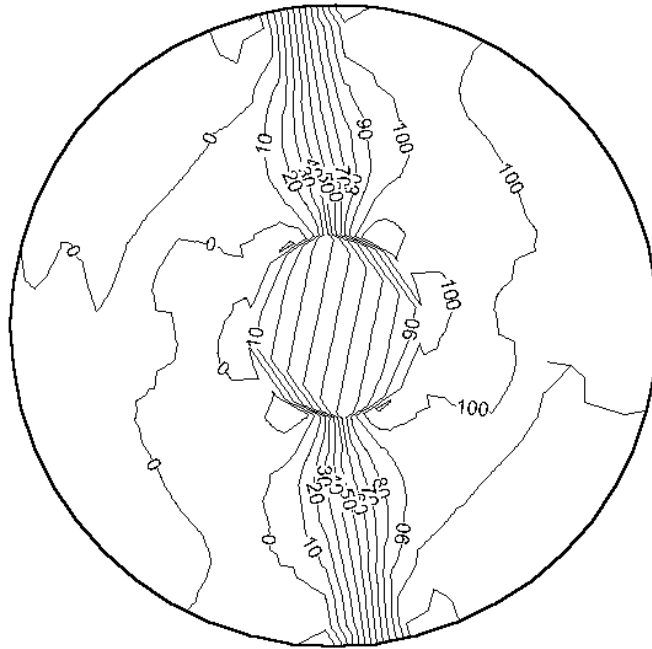
**South Hemisphere Approximation of**  
 **$F(x,y,z) = 100$  on East Hemisphere**  
 **$F(x,y,z) = 0$  on West Hemisphere**  
**With Rotations I and II**



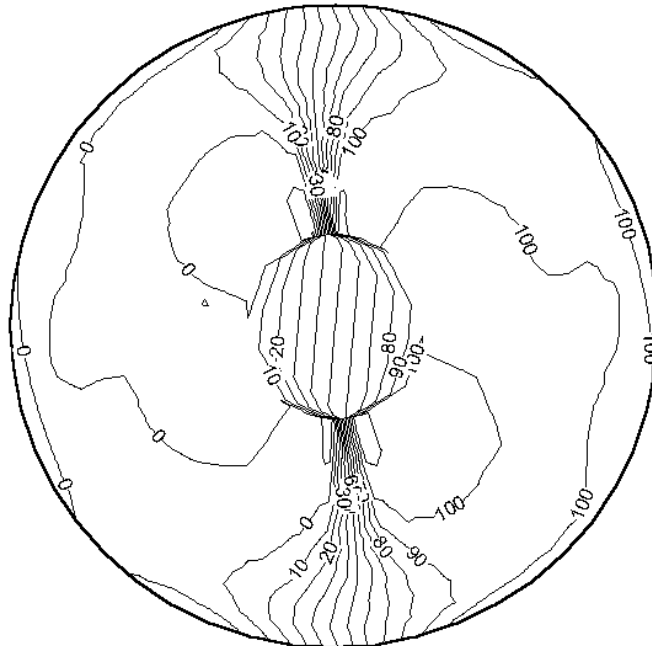
**North Hemisphere Approximation of**  
 $F(x,y,z) = 100$  on East Hemisphere  
 $F(x,y,z) = 0$  on West Hemisphere  
 With Rotations I, II and III



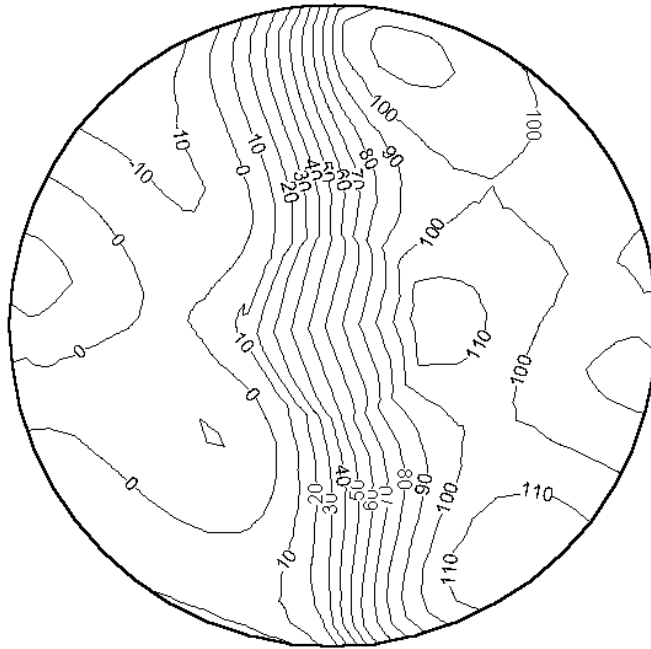
**South Hemisphere Approximation of**  
 $F(x,y,z) = 100$  on East Hemisphere  
 $F(x,y,z) = 0$  on West Hemisphere  
 With Rotations I, II and III



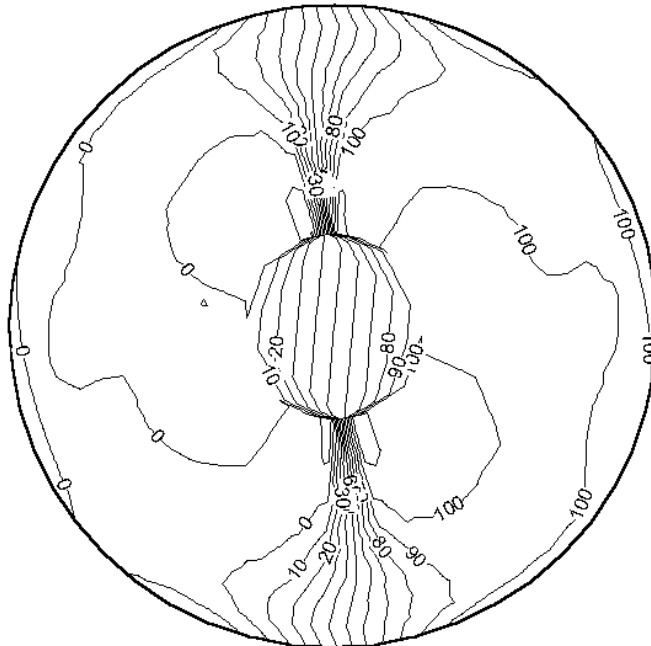
**North Hemisphere Approximation of**  
 **$F(x,y,z) = 100$  on East Hemisphere**  
 **$F(x,y,z) = 0$  on West Hemisphere**  
**With Rotations I, II, III and IV**



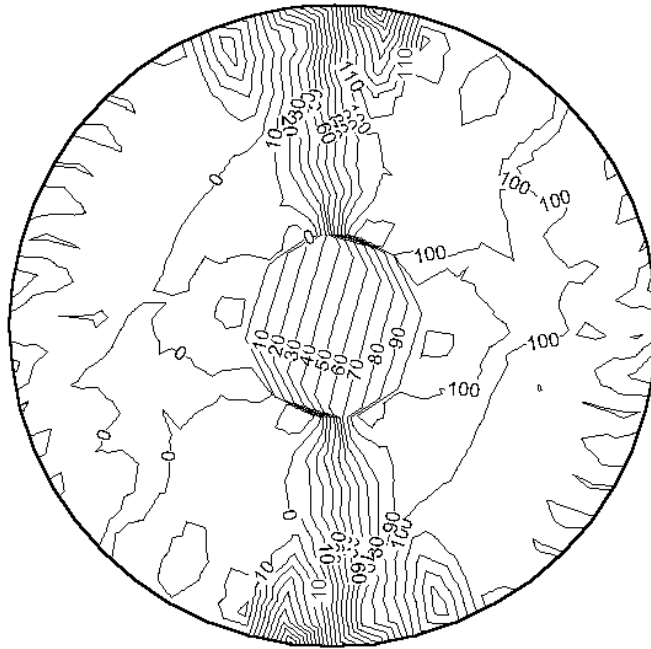
**South Hemisphere Approximation of**  
 **$F(x,y,z) = 100$  on East Hemisphere**  
 **$F(x,y,z) = 0$  on West Hemisphere**  
**With Rotations I, II, III and IV**



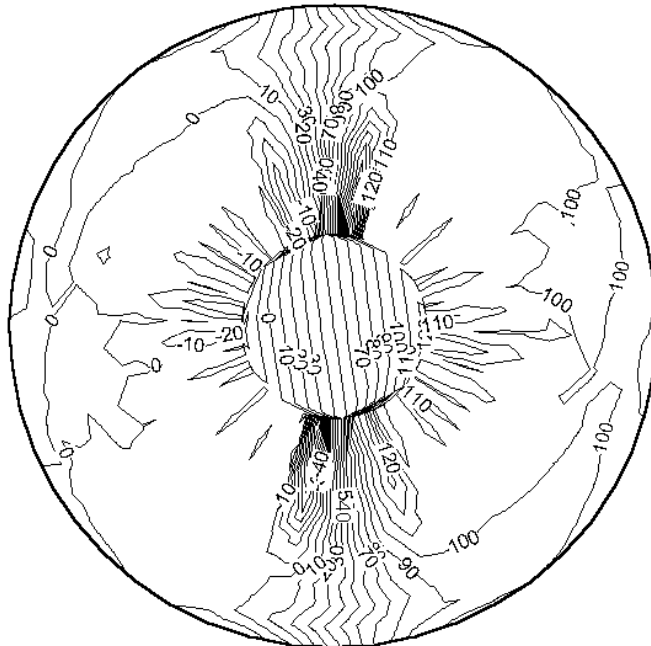
**North Hemisphere Approximation of**  
 $F(x,y,z) = 100$  on East Hemisphere  
 $F(x,y,z) = 0$  on West Hemisphere  
 CVBEM NODES = 4 per Plane (Full CVBEM Function)



**South Hemisphere Approximation of**  
 $F(x,y,z) = 100$  on East Hemisphere  
 $F(x,y,z) = 0$  on West Hemisphere  
 CVBEM NODES = 4 per Plane (Full CVBEM Function)



**North Hemisphere Approximation of**  
 $F(x,y,z) = 100$  on East Hemisphere  
 $F(x,y,z) = 0$  on West Hemisphere  
 CVBEM NODES = 24 per Plane (Full CVBEM Function)



**South Hemisphere Approximation of**  
 $F(x,y,z) = 100$  on East Hemisphere  
 $F(x,y,z) = 0$  on West Hemisphere  
 CVBEM NODES = 24 per Plane (Full CVBEM Function)